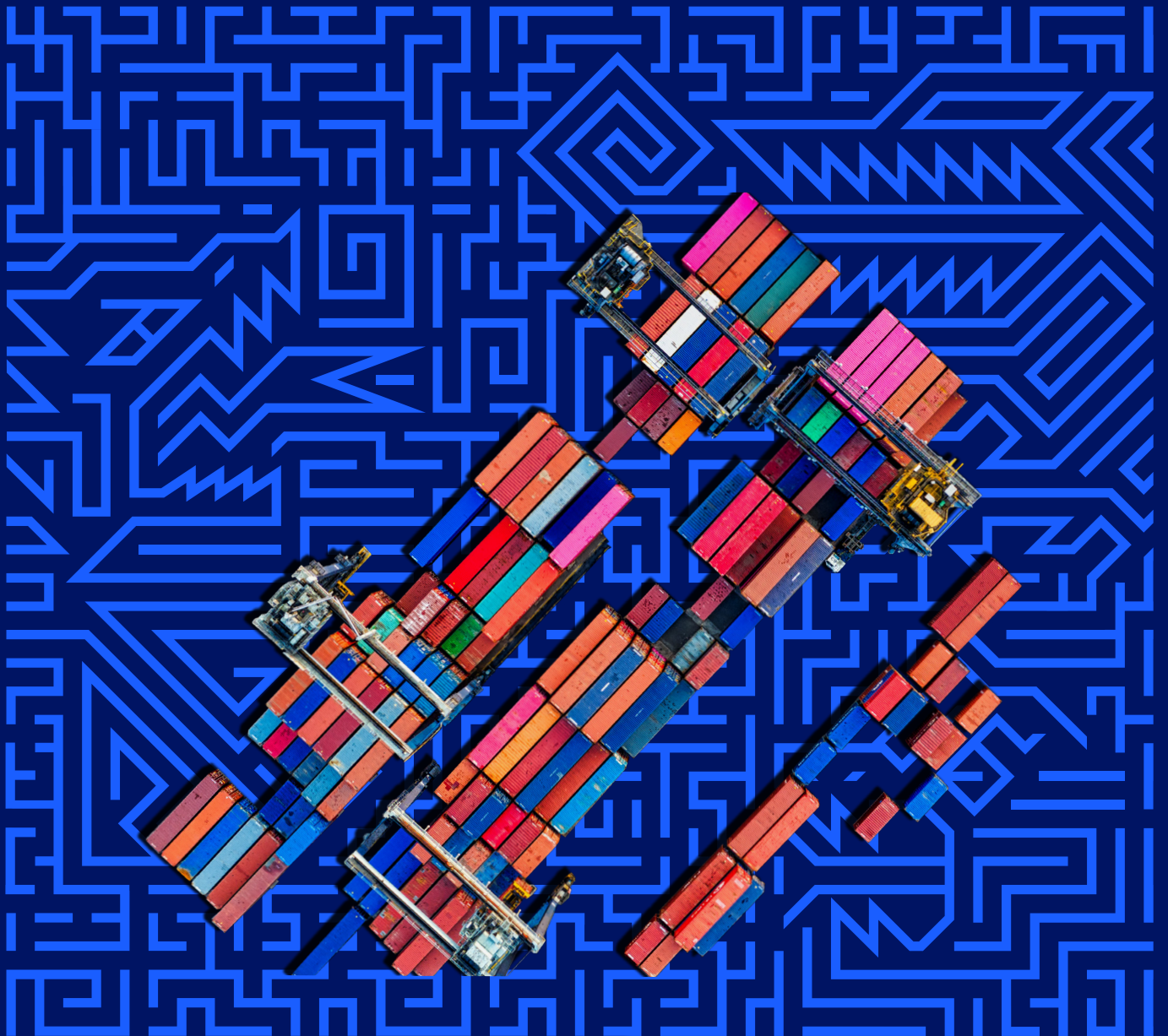
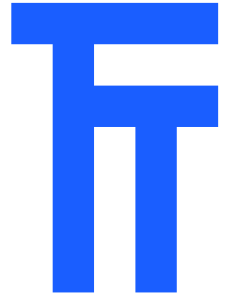


WHEN VISIBILITY IS KEY TO PRODUCTIVITY, DON'T LOSE SIGHT OF OPERATIONS



BECAUSE IT WORKS

TERMINAL TRACKER is a powerful, scalable management system that tracks your assets and delivers real time data at the gate, quay and yard to the control room for improved safety and efficiency.



True insight, improved productivity

Terminal Tracker gives you control, makes teams work more efficiently, delivers valuable insights and eliminates wastefulness. It will become a key tool for planning day-to-day operations and optimising terminal management.

Terminal Tracker provides real-time visibility for comprehensive operations planning, process optimisation and fleet management.

Keeping the yard moving

Safety and productivity are priorities in a busy global container terminal. Analysis of procedures and accurate data can prevent accidents, which means fewer stoppages and damage claims.

Comprehensive records of container movements and vehicle activity allow insight into improved predictability.

Terminal Tracker allows flexible operational day-to-day planning based on ship size, asset availability, and deadlines without the complexity of conventional planning.

If unforeseen changes occur, an operational plan can be adapted quickly and easily with the user-friendly Terminal Tracker planning module.

Process optimisation

Automated job promotion improves accuracy, safety and turnaround time by automatically identifying trucks and eliminating the need to search through a long job list.

With the control of twist-locks, no unplanned container moves are permitted, making lost containers a thing of the past.

Terminal Tracker allows control access to your terminal, dedicated zones and vehicles all within one system - real-time data from the gate, quay and yard.

Fleet management optimises your terminal operations further, plans vehicle use and maintenance times, and tracks fuel consumption, tyre pressure and PLC errors, saving costs and reducing the risk of accidents.

Plug & Play

Terminal Tracker is built to integrate into your existing IT landscape, compatible with the latest wireless technology. It works out of the box with the most available Terminal operating systems, such as Navis Ready N4 and SPARCS.

Easily installed, Terminal Tracker is highly flexible, designed for a container terminal's specific needs and scaled up with additional systems and functionality as the operation grows.

KEY BENEFITS

- Makes you work smoother
- Gives you control
- Gives you valuable insight
- Makes your life easier
- Keeps your people safe
- Saves you money

With visibility comes insight

Map trends and fine-tune processes to increase efficiency and productivity. Terminal Tracker provides real-time data to improve container throughput, staff safety, and terminal security.

Overall, your reputation as a reliable container terminal will grow and positively impact your business goals.

“Our goal was to help our people manage more containers per day and ensure that our equipment was operating at the highest productivity. Identec Solutions ticked all the right boxes on cost and capabilities.”

**– Matt Hunnicutt, IT Director
Long Beach Container Terminal**

TERMINAL TRACKER IN ACTION



“Our project at the automated TTI Algeciras terminal was our first experience with integration of RFID. Identec Solutions offered us a great deal of support and enabled us to easily integrate their technology in our program environment.”

**– Rob Jordan, Managing Director,
IT, Partner BV**



LEARN MORE



ABOUT IDENTEC SOLUTIONS

Among the potentially dizzying array of change and challenges it's reassuring to know that there are easy-to-use, robust products accessible everywhere, providing a common platform based on industry standards and driven by a detailed understanding of markets and customer needs.

That's what we've been creating at Identec Solutions for over 20 years. If you'd like to know more about our technical expertise, in-depth application of know-how and long-standing experience, call us now at +(43) 5577 87387-0 or visit identecsolutions.com.

BECAUSE IT WORKS

CONTACT US

HEAD OFFICE Identec Solutions AG

Millennium Park 2
6890 Lustenau
Austria
+43 5577 87387 0
Fax: +43 5577 87387 15
sales@identecsolutions.com

GERMANY Identec Solutions Deutschland GMBH

Löffelstraße 44
70597 Stuttgart
Germany
+43 5577 87387 0 (Head office)

NORWAY Identec Solutions Norway AS

Andøyfaret 15
4623 Kristiansand
Norway
+47 38 00 35 30

USA Identec Solutions, Inc

15150 Preston Rd
Suite 300
Dallas, Texas 75248
USA
+1 972 535 4144

AUSTRALIA Identec Solutions Australia and New Zealand PTY LTD

Riverview Business Park
72 Maribyrnong Street
Footscray VIC 3011
Australia
+61 3 9396 8900

[IDENTEC SOLUTIONS.COM](https://identecsolutions.com)